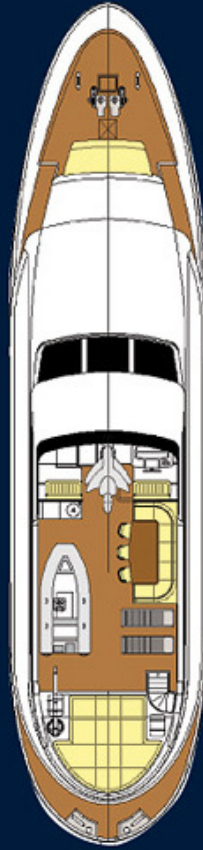
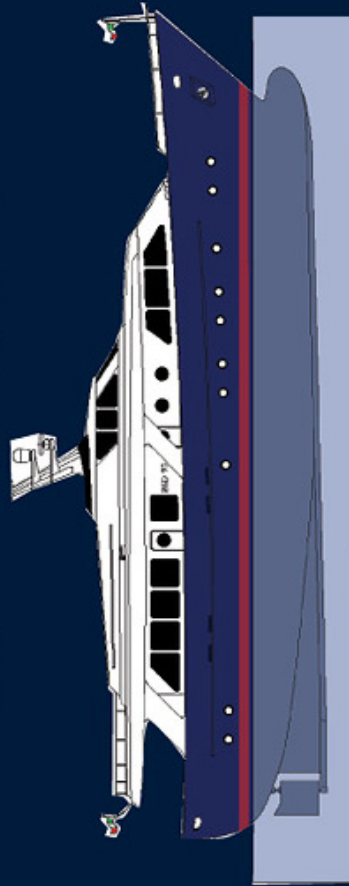
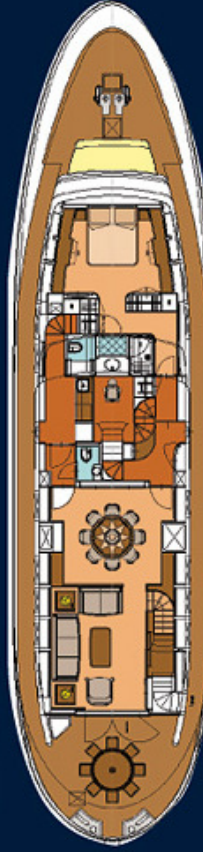


BENETTI SAIL DIVISION 95' DISPLACEMENT



Version: a

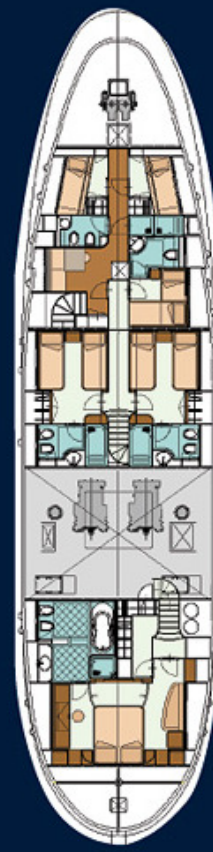
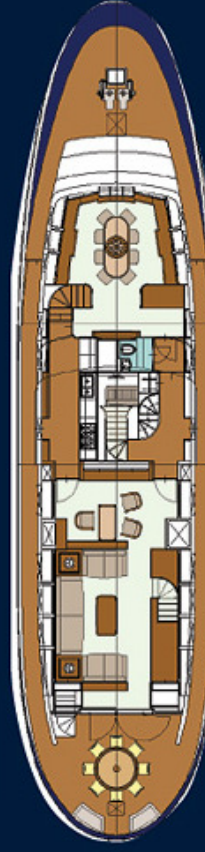


Specification

MAIN SPECIFICATION

- Length (Loa, ISO 8666)
- Length (Lwl, ISO 8666)
- Beam (B ISO 8666)
- Height, Main Deck
- Draft - (propeller, full load - Tmax ISO 8666)
- Indoor height (Main Bridge)
- Fuel Tank
- Fresh Water Tank Capacity
- Waste Water Tank Capacity
- Displacement, empty
- Construction Materials:
 - Hull
 - Superstructure
- Classification Registry/Class
- Speed & Range:
 - Cruising Speed (Half-Load)
 - Maximum Speed (1/3 Load)
 - Range at 10 knts (@ 1.800 rpm)
- Engines

Version: b



- 28.60 m
- 24.50 m
- 6.70 m
- 2.85 m
- 2.10 m
- 2.15 m
- 30,000 litres
- 4,500 litres
- 0.70 m³
- 115 Tons
- Marine Steel (FE 420)
- Aluminium (5083 H 321)
- RINA 100 A 1.1 "Y"
- 12.00 knots @ 2,000 rpm
- 13.50 knots @ 2,300 rpm
- 2,800 nm
- 2 x CAT 3406E 600 hp @ 2,100 rpm